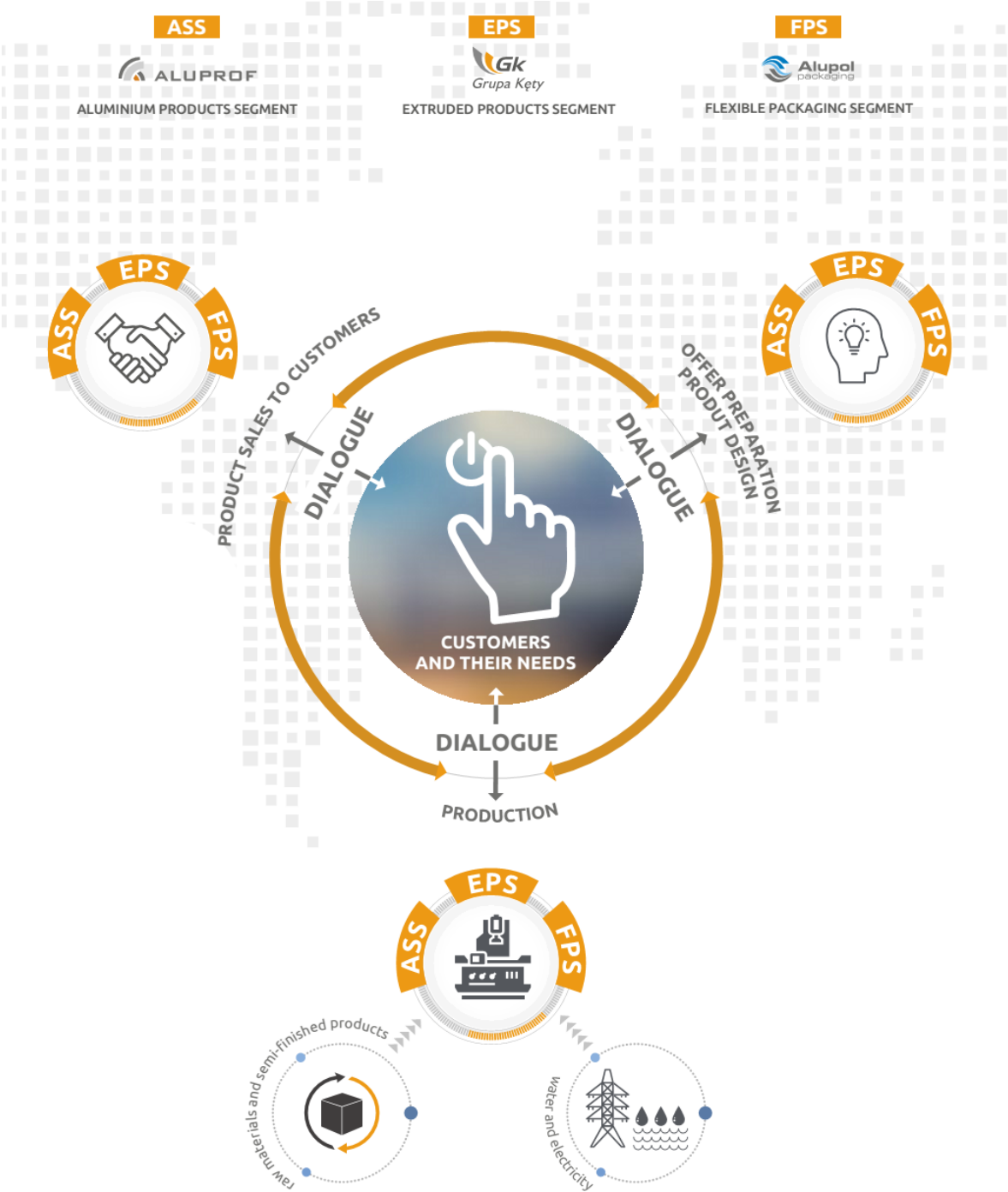
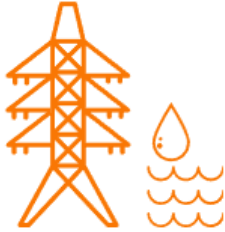


# Business model



# RAW MATERIALS AND NATURAL RESOURCES



## Capitals

200,000 tonnes of purchased raw materials

893,000 GJ of consumed electricity

524,000 GJ of consumed natural gas

762,000 m<sup>3</sup> of consumed water

## Accomplished Results

29,500 tonnes of recycled aluminium scrap

Improvement of electricity consumption efficiency per production unit by 7% y/y

Higher greenhouse gas emissions per production unit by 11% y/y

Lower water consumption per production unit by 3% y/y

# PRODUCTION ASSETS



## Capitals

Property, plant and equipment of PLN 1,337 million

Current assets (inventories, receivables) of PLN 1,205 million

Capital expenditure of PLN 231 million

## Accomplished Results

PLN 3.0 billion sales revenue

97% production capacity utilisation

PLN 231 million paid to machine suppliers and property developers

10% Return on Assets (RoA)

# PEOPLE, EXPERTISE AND RELATIONS



## Capitals

5,146 employees

26% of women

72% of staff employed for unlimited term

4,200 customers

3,000 suppliers

Research and Development Centre 5 laboratories over 100 R&D employees

## Accomplished Results

Experience, expertise and wisdom grow with age, which translates into innovation and creativity

Sense of security translates into loyalty to the company

7.2 hours of training per employee

2,458 new profile dies introduced

## FINANCE



### Capitals

Equity of PLN 1,397 million

Balance-sheet liabilities of PLN 1,383 million

Public aid (income tax exemption) of PLN 33.2 million

### Accomplished Results

PLN 229 million dividend paid to shareholders

PLN 57 million income tax paid in Poland

19% Return on Equity (RoE)

PLN 142 million VAT paid in Poland